

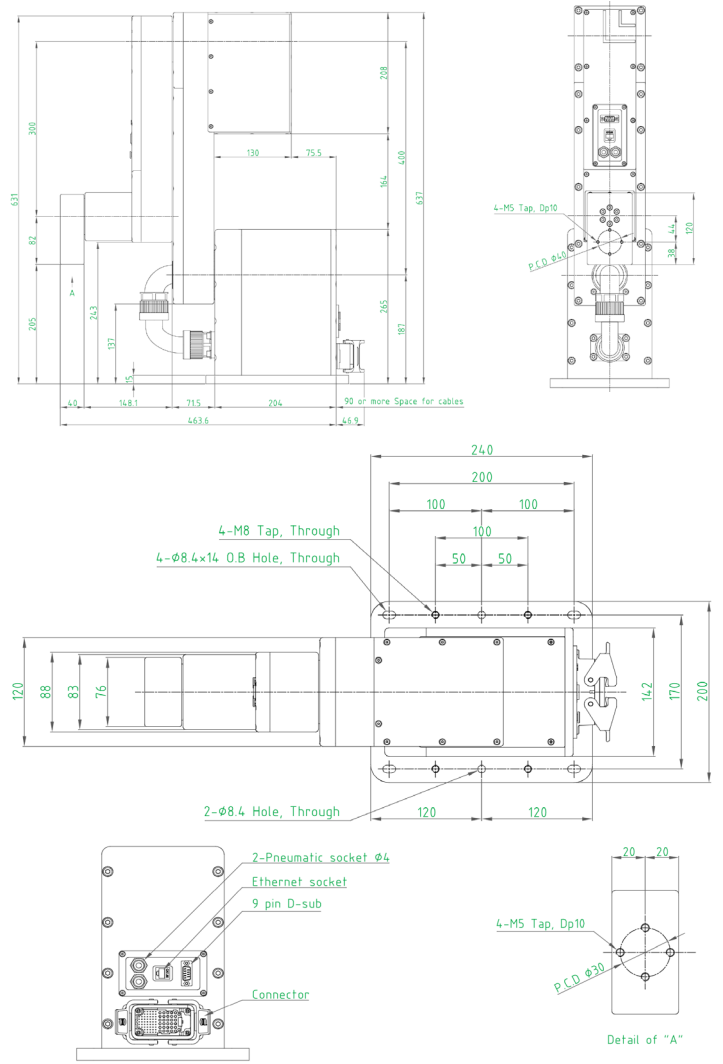
PPA^① 400^② _____^③ _____^④

- ① Robot Type : PAA (6 axis Articulated), PSA (4 axis SCARA), PPA (3 axis Planar)
- ② Max. Motor Power : 400W, 800W
- ③ Arm Length : Standard (None), Long (L), Extra Long (XL)
- ④ Installation : Floor (None), Wall (W), Ceiling (C)

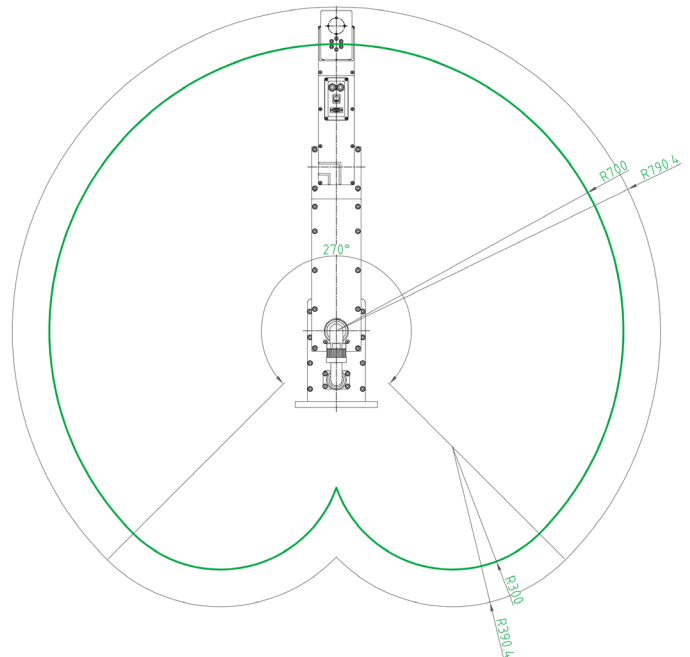
Specifications

| Item | Specification | |
|--|-----------------|-------------------------------------|
| Brand | Pal®A3 | |
| Robot Model | PPA400 | |
| Structure | 3 Axis Planar | |
| Degree of Freedom | 3 | |
| Drive System | AC servo system | |
| Break | All Axis | |
| Payload (Max.) | 1 Kg (4kg) | |
| Reach | 700mm | |
| Weight | 19 Kg | |
| Repeatability | ± 0.02 mm | |
| Max. Speed | Axis 1 | 337.5 °/s |
| | Axis 2 | 337.5 °/s |
| | Axis 3 | 540 °/s |
| Range of Motion | Axis 1 | ± 135° |
| | Axis 2 | ± 180° |
| | Axis 3 | ± 180° |
| Allowable static load torque for wrist | Axis 3 | 12 N·m |
| Allowable moment of inertia for wrist | Axis 3 | 0.18 kg·m ² |
| Motor power consumption | Axis 1 | 400 W |
| | Axis 2 | 200 W |
| | Axis 3 | 100 W |
| User cabling | Electrical | D-Sub 9pin x1ea RJ45 8pin x1ea |
| | Pneumatic | Φ4mm x 2ea |
| Standard cycle time | | 0.37 sec |
| Installation | | Floor |
| Ambient Temperature | | 0 to 45°C |
| Ambient Humidity | | 25 to 85% RH (without condensation) |
| Noise Level | | < 70 dB |
| Safety Standard | | CE, KCs |
| Protection Class | | - |
| Controller | | RCA800 |
| Power | | Single Phase AC200-240V |
| Power Supply Voltage | | 1.5 kVA |
| Cable Length | | - |

Dimension



Range of Motion



MINTROBOT Co., Ltd.

Headquarters

#301-2, Convergence Technology Commercialization Center, 218, Gajeong-ro, Yuseong-gu, Daejeon, 34129, Republic of Korea

R&D Center, Factory, Sales Office

#330~333, Sambo Techno Tower, 122, Jomaru-ro, 385beon-gil, Bucheon-si, 14556, Gyeonggi-do, Republic of Korea

Tel. +82 32 663 4530 Fax. +82 32 663 4531

E-Mail : sales@mintrobot.com

Website : <http://www.mintrobot.com>